



Murray Grove, London, N1

BUTLER  STAG



Well presented and spacious one bedroom first floor apartment, close to Old Street station and walking distance to the City, Hoxton, Shoreditch and Islington. Offered part furnished and available from 19th January 2024.



- One Double Bedroom Apartment
- Close to Old Street Station
- Available 19th January 2024
- Part Furnished
- Spacious Throughout
- First Floor
- Shoreditch, Hoxton and Islington Close By
- Plenty of Storage

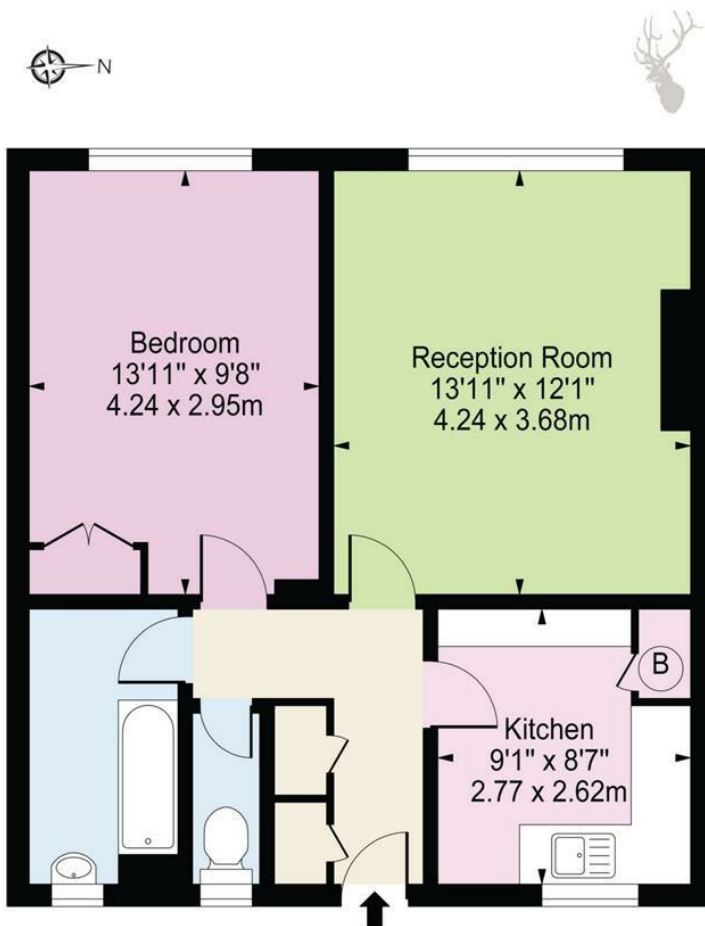
Well presented and spacious one bedroom first floor apartment, close to Old Street station and walking distance to the vibrant areas of the City, Hoxton, Shoreditch and Islington.

The accommodation comprises of a large light living room, kitchen, double bedroom with fitted wardrobes, bathroom and separate WC.

Offered part furnished and available from 19th January 2024.







First Floor

Approx. Gross Internal Area 534 Sq Ft - 49.61 Sq M

For Illustration Purposes Only - Not To Scale

IMPORTANT NOTICE - These particulars have been prepared in good faith and they are not intended to constitute part of an offer or contract. We have not performed a structural survey on this property and the services, appliances and specific fittings have not been tested. All photographs, measurements, floor plans and distances referred to are given as a guide and should not be relied upon.

BUTLER & STAG

☎ 020 8102 1236

🏠 508 Roman Road, Bow, London, E3 5LU

✉ bow@butlerandstag.com

www.butlerandstag.uk